



## AUTOMOTIVE TECHNICAL SERVICE BULLETIN

No. TB 3 7000 Series

Group: 10.000

Date: April 15, 1970

Subject: Front Suspension Strut Rod Bushing Assembly Sequence - All 7000 Series

### ALL DEALERS

The following information clarifies the correct assembly sequence of the front suspension strut rod bushing, specifically in the placement of the concave washers which adjoin the bushing.

### 10-30-70-80 Series (2nd Type)

A two piece bushing is used on the 10-30-70 and 80 Series. Both washers must be positioned with their concave side toward the front of the car. The concave side of the front washer must face away from the bushing and the concave side of the rear washer must face the bushing (Figure 1).

### 01-40 Series and 1st Type on 10-30-70-80 Series

A one piece bushing is used on all 01 and 40 Series and a small number of very early production 10-30-70-80 Series. The washers must be positioned with their concave side facing away from the bushing (Figure 2).

F. H. Brodek

FHB  
mhw

(OVER)

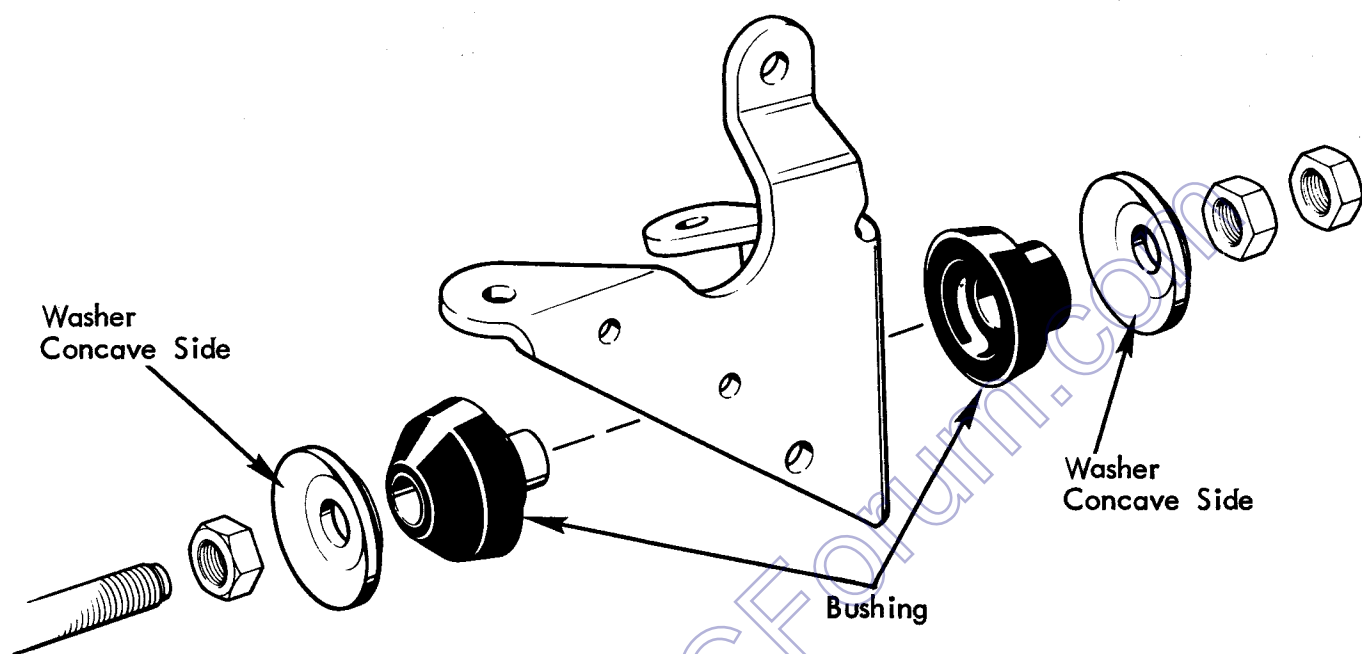


FIGURE 1 - TWO PIECE BUSHING ASSEMBLY SEQUENCE

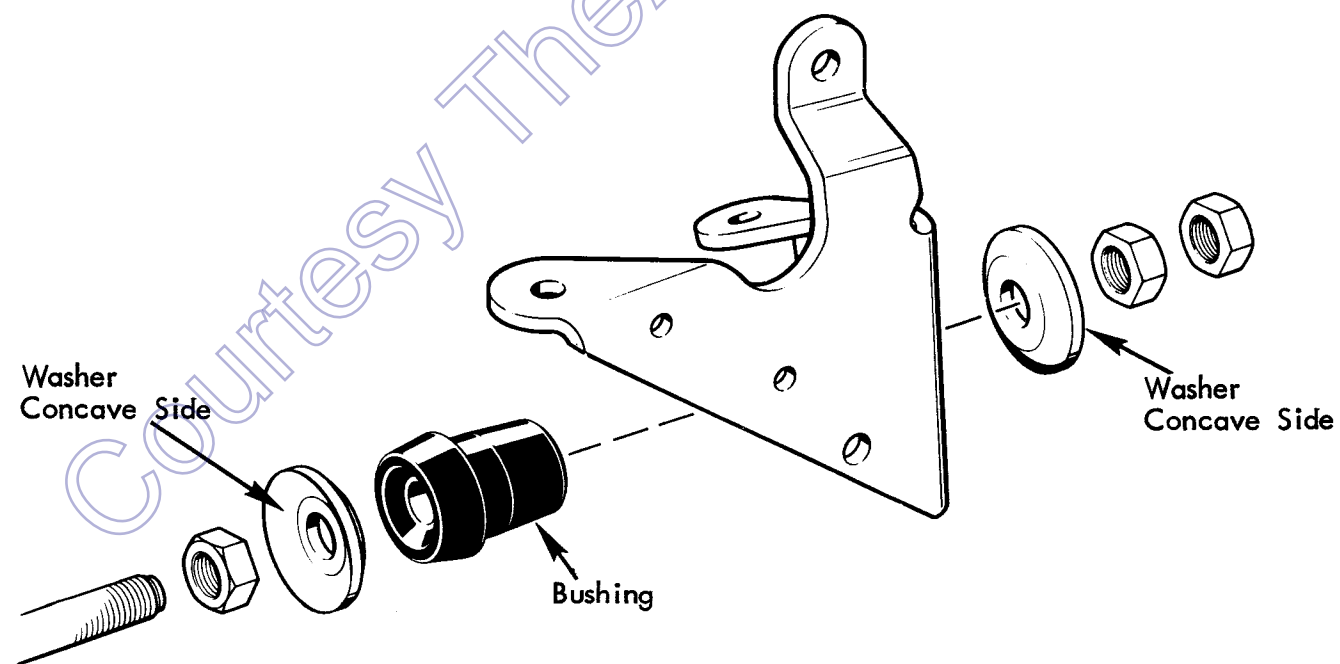


FIGURE 2 - ONE PIECE BUSHING ASSEMBLY SEQUENCE